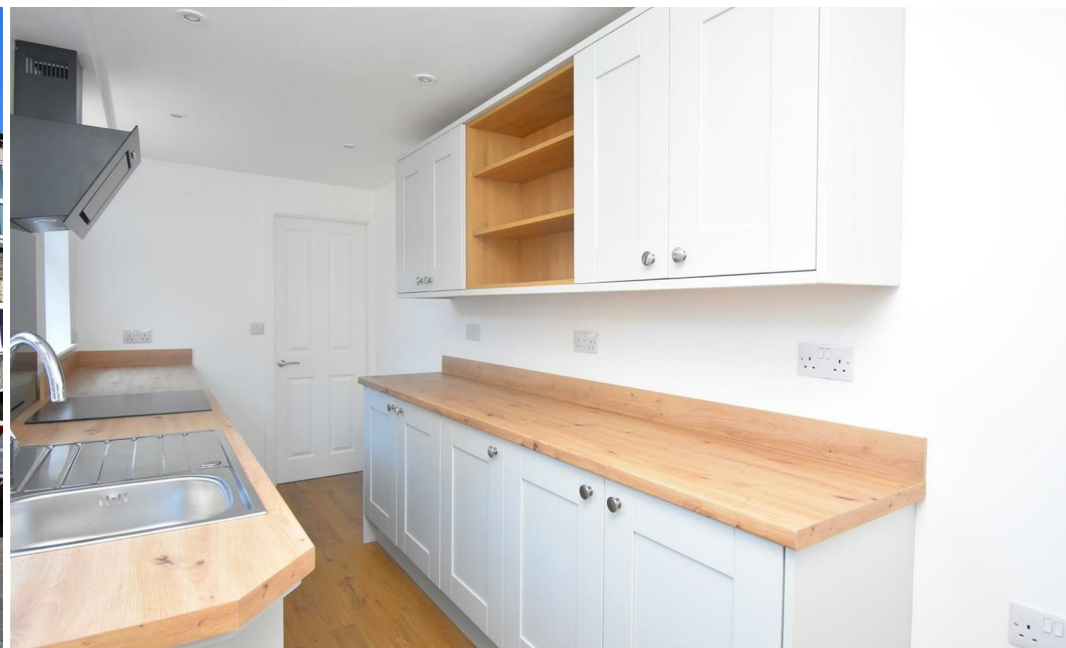


HUDSON
MOODY

Lower Ebor Street York YO23 1AY

Rent: £1,600 PCM
Deposit: £1,788
Furnishing: Unfurnished
Council Tax Band: B
Available immediately



- 3-bed terraced house
- New kitchen and bathroom
- Downstairs WC
- Located just off Bishopthorpe Road
- Council tax band B

- Recently renovated
- Rear courtyard
- Bright open living room
- Easy access to the town centre and train station
- Available immediately



A recently renovated 3-bed terraced house boasts a private rear courtyard, 3 double bedrooms, bathroom, downstairs WC and a bright, open living room.

The property's recent renovation creates a fresh, modern space with brand new features throughout, including newly fitted kitchen and bathroom.

Located just off the popular Bishopthorpe Road with easy access to a range of amenities, including shops and restaurants, with easy access to the station and town centre.

Council tax band B.

No smokers, no pets. Available immediately.

| Energy Efficiency Rating | | |
|---|-------------------------|-----------|
| | Current | Potential |
| Very energy efficient - lower running costs | | |
| (92-plus) A | | |
| (81-91) B | | |
| (69-80) C | | |
| (55-68) D | | |
| (39-54) E | | |
| (21-38) F | | |
| (1-20) G | | |
| Not energy efficient - higher running costs | | |
| England & Wales | EU Directive 2002/91/EC | 87 |

| Environmental Impact (CO ₂) Rating | | |
|---|-------------------------|-----------|
| | Current | Potential |
| Very environmentally friendly - lower CO ₂ emissions | | |
| (92-plus) A | | |
| (81-91) B | | |
| (69-80) C | | |
| (55-68) D | | |
| (39-54) E | | |
| (21-38) F | | |
| (1-20) G | | |
| Not environmentally friendly - higher CO ₂ emissions | | |
| England & Wales | EU Directive 2002/91/EC | |



York- Lettings 58 Micklegate, York, North Yorkshire, YO1 6LF 01904 629629 lettings@hudson-moody.com